

# Extending Spreadsheets to Support Seamless Navigation at Scale

Sajjadur Rahman, Mangesh Bendre, Yuyang Liu, Shichu Zhu, Zhaoyuan Su,  
Karrie Karahalios, Aditya Parameswaran

**Abstract**—Spreadsheets are one of the most popular tools for ad-hoc exploration and analysis of data. Despite that, exploring and analyzing spreadsheet datasets that span more than a few screens via operations such as scrolling or issuing formulae, is often overwhelming for end-users. Users easily lose context as they explore the data via scrolling and suffer from cognitive and mechanical burdens while issuing formulae on data spanning multiple screens. We propose integrating a navigation plug-in with spreadsheets to support the seamless exploration of large datasets that are increasingly the norm. Our interface, NOAH, developed using lessons from classical overview+detail interfaces, embeds a multi-granularity zoomable overview alongside the spreadsheet. Users can employ the overview to explore the data at various granularities. Furthermore, they can issue formulae over subsets of data without performing cumbersome scrolling or range selection operations, enabling users to gain a high or low-level perspective of the spreadsheet data. NOAH preserves spreadsheet semantics and look and feel, while introducing such enhancements. Our user study demonstrates that NOAH makes it more intuitive, easier, and faster to navigate spreadsheet data compared to traditional spreadsheets like Microsoft Excel, for a variety of navigational tasks; participants made  $2.5\times$  fewer mistakes in NOAH than in Excel while being twice as fast in completing the tasks.

**Index Terms**—Spreadsheet navigation, interactive data exploration and discovery, user-centered design, graphical user interfaces, data exploration, overview+detail.



## 1 INTRODUCTION

With a user base of more than one-tenth of the world’s population, *spreadsheets are by far the most popular medium for ad-hoc exploration and analysis of data* [1]. Studies show that information workers prefer to operate on their data within spreadsheets while shunning enterprise solutions with more advanced analytical features [2], [3]. One popular joke among those developing business intelligence applications is that the “export to excel” button is the third-most commonly used button from the menu bar, after OK and Cancel [4]. Spreadsheets enable users to view, structure, and present data in an intuitive tabular layout, wherein users can map their data and tasks; this tabular layout is essential to the popularity of spreadsheets [5].

Using this tabular layout effectively involves navigation, *i.e.*, “the process of viewing and manipulating the computer display to show another portion of the information space” [6]. Navigation is supported via two unit operations, scrolling and steering. Scrolling is the action of moving displayed text or graphics up, down, or across a computer screen, in order to view different parts of the spreadsheet. For example, when analyzing data, users may scroll to compare data across different screens, or to get a high-level view of the

overall spreadsheet. Steering, on the other hand, involves clicking the left mouse button and then dragging the mouse pointer through the spreadsheet to select a specific region. For example, to issue a formula, users may steer to select the subset of the data to be operated on as an argument within the formula. Most frequently used spreadsheet formulae require users to perform steering actions [7], [8]. Overall, both scrolling and steering are crucial as users navigate spreadsheets to identify, compare, and summarize data.

However, navigating spreadsheets using scrolling or steering is challenging, since spreadsheet data span multiple screens, making it hard to synthesize, analyze, make sense of, or operate on it [5], [9]. With the ease of data generation, and with spreadsheets now supporting increasingly larger datasets, *e.g.*, Google Sheets now supports five million cells [10], a  $12.5\times$  increase from the previous limit of 400K cells, *navigating data within spreadsheets is only becoming even harder*, thanks to multiple inter-related reasons:

- Sajjadur Rahman, Yuyang Liu, Shichu Zhu and Karrie Karahalios are with the Department of Computer Science at University of Illinois, Urbana-Champaign. Email: {srahman7, yuyangl2, szhu28, kkarahal}@illinois.edu.
- Mangesh Bendre is with VISA Research. Email: mbendre@visa.com.
- Zhaoyuan Su with the School of Information and Computer Sciences at the University of California Irvine. Email: nick.su@uci.edu.
- Aditya Parameswaran is with the I School and EECS at the University of California, Berkeley. Email: adityagp@berkeley.edu.

- *Loss of overview and context.* When navigating spreadsheets, users can easily lose the context of where they are and where they should go next [9]. The only navigational context provided by spreadsheets is the built-in scrollbar that acts as a one-dimensional overview and indicates the user’s current location on the sheet. However, since this overview does not capture the layout and structure of the data, users are forced to mentally assimilate the layout and recall it on-demand, as they navigate a spreadsheet.
- *Cognitive and mechanical burdens.* The lack of contextual cues leads to severe cognitive and mechanical burdens for users [11]. Users often end up taking their own

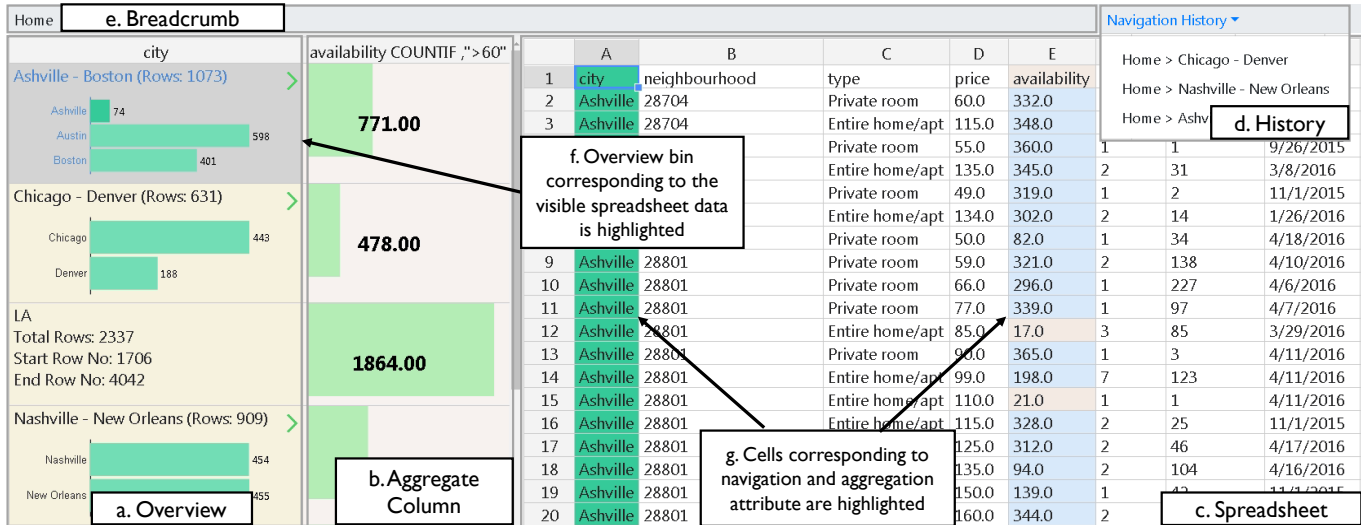


Fig. 1. NOAH: navigation interface consisting of (a) a zoomable overview and (b) an aggregate column integrated with (c) a spreadsheet. A context bar consisting of (d) a navigation history displaying locations visited so far using the overview, and (e) a breadcrumb showing the current navigation path (e.g., Home). (f) The users current focus in the spreadsheet is highlighted on the overview. (g) Columns corresponding to the navigation attribute (city) and aggregate column (availability) are highlighted on the spreadsheet.

drastic measures to avoid getting lost; for example, some users create personalized overviews extrinsic to the spreadsheet, by sketching maps of spreadsheets on paper [9]. Other users add their own landmarks such as headers or colored cells, as a visual affordance to assist in navigation [9]. Steering via dragging the mouse pointer across multiple screens to select a subset of data as input to a formula can often be challenging as well: the only remedy is for users to abandon steering entirely and instead remember the range of the subset of data of interest, and then correctly enter this range as the argument to the formula, often giving rise to errors that are increasingly prevalent in spreadsheets [12].

- *Visual discontinuities.* The limited viewport afforded to the user introduces a visual discontinuity between the information being displayed. For example, comparing spatially separated subsets of data within the spreadsheet requires moving back and forth between multiple viewports, which can be overwhelming [5], [9]. As an alternative, users tend to copy subsets of data side by side to reduce the visual discontinuity [5], [9], which is cumbersome.

Overall, while navigating present-day spreadsheets, *users often lose context, get overwhelmed, and experience visual discontinuities.* Addressing these challenges requires considerable manual effort. As we will argue in Section 3, existing spreadsheet features such as pivot tables, named ranges, and subtotals, partially alleviate some of the aforementioned challenges but do not eliminate them entirely. For example, pivot tables generate a summary while losing the correspondence between the raw data and the summary, while named ranges require users to manually associate names with ranges of data.

So, how do we support more effective navigation of data within spreadsheets? One approach would be to try to integrate an overview of the overall structure of the data along with the spreadsheet [13] resulting in a clas-

sical overview+detail interface where the spreadsheet is the detailed view. Overview+detail interfaces are used to facilitate navigation in various domains such as text editors and maps [11]. Users can manipulate the overview or detailed view, to perform high-level or low-level operations, respectively. Overview+detail interfaces have been shown to be effective in these domains, reducing cognitive load for users by providing them the big picture first, helping them quickly assimilate the information space [11]. Our goal is to *integrate an overview plug-in with spreadsheets* that captures the overall structure of the data, while supporting interactions that address the difficulties in typical navigational operations like scrolling and steering. *It is essential that our interface is a plug-in that enhances the capabilities of spreadsheets that so many users are used to and reliant on, as opposed to a potentially jarring or confusing replacement for spreadsheets.*

However, while an overview plug-in for spreadsheets does seem appealing and natural, developing it leads to several challenges.

- *Overview modality.* One could simply add a zoomed out version of the entire sheet as a pane on the side to create a spreadsheet overview, as in popular presentation software like Microsoft PowerPoint, or text editors like Sublime Text. The zoomed out overview would display the data at a lower magnification. Unfortunately, this approach would not suffice for a spreadsheet. An overview should provide a comprehensible big picture view; for a spreadsheet of numbers, text, or formulae, when zooming out beyond a point, an overview displayed at such low magnification would be unreadable. Another approach, adopted by map tools like the early versions of Google maps, is to use the overview to provide a global context of the user's current location currently displayed in the zoomed-in detailed view [11]. While the overview remains static, users can perform semantic zooming operations [14] on the detailed view

which allows objects to be represented differently at different scales. Since spreadsheets already display the raw data, zooming into and out of a detailed view consisting of this raw data is not meaningful. How do we design an overview to dynamically change as users seek a more fine-grained or coarse-grained view of the overall structure of the data?

- *Construction of the overview.* Given a spreadsheet with many rows, one approach to constructing a dynamic overview is mapping rows of data to high level groups, similar to online maps. In online maps, cities are grouped into states and states are grouped into countries, forming a multi-granularity hierarchy. How do we automatically group spreadsheet rows together in a similar “meaningful” way such that this grouping applies to all data types, including strings and numbers? If the automatically generated grouping is not semantically meaningful, how do we allow the users to customize the grouping modality? How do we facilitate interactions that enable users to view the overview at multiple granularities?
- *Operations on the overview.* Following the construction of a dynamic overview, the next challenge is to design simple interactions that achieve similar outcomes as scrolling and steering. For example, an alternative to scrolling can be to leverage the groups of the overview to access the rows mapped to that group. As the granularity of the dynamic overview changes, how do we efficiently update the mapping from spreadsheet rows to the finer or coarser groups so that scrolling remains seamless? Similarly, how do we leverage the overview to steer spreadsheet data (i.e., select a range of data) for formula computation? How do we present the results of the formula within the overview? One approach can be to adopt the pivot table-like presentation of results. Within their summary view, pivot tables display aggregate formula results (e.g., SUM, COUNT) alongside each group. However, unlike pivot tables, users can explore the overview at multiple granularities. As the granularity changes, the grouping of rows also changes; making the previous formula results inconsistent with the new groups. How do we recompute the results of a formula in a convenient manner as the granularity changes without requiring the users to reissue the formula from scratch?
- *Seamless integration as a plug-in.* Finally, how can we design an overview with a generic set of features, that can be integrated with any existing spreadsheet tool, operating on any dataset, without impacting existing functionalities or look-and-feel? How do we ensure that the interactions supported by the overview are consistent with traditional spreadsheet semantics, and complement existing spreadsheet interactions? How do we enable coordinated interactions across both views, i.e., the overview and the raw spreadsheet, such that they remain consistent at any given time?

address the aforementioned challenges in NOAH<sup>1</sup>, an in-situ navigation interface for **o**verviewing and **a**nalyzing spreadsheet data **h**olistically. NOAH is constructed as a plugin to an existing spreadsheet tool, DATASREAD [15], an open-source scalable web-based spreadsheet. While NOAH’s design is not tied to DATASREAD, we opted not to use other popular spreadsheet tools like Google Sheets and Microsoft Excel because they are closed source. Figure 1 shows a snapshot of NOAH. When the user chooses to explore the data by a specific attribute, a multi-granularity overview is constructed and displayed within NOAH, next to the raw spreadsheet data (Figure 1a). Users can zoom into or out of the overview to obtain a fine or coarse-grained perspective of the data distribution. The distribution at each granularity is captured by a histogram, enabling users to assimilate the data via summary statistics. Each bin (group) of the histogram is mapped to a collection of rows in the spreadsheet. Cumbersome scrolling operations are eliminated in favor of a few clicks on the overview interface. Instead of steering to analyze the data, users can issue formulae on the overview with interactions similar to pivot table construction, and view results on a separate *aggregate column*, alongside the overview (Figure 1b). In this manner, users can issue formulae on different subsets of the data while remaining on the same screen, reducing visual discontinuity. NOAH ensures that there is coordination between the overview and the spreadsheet: for example, panning and zooming on the overview are reflected on the spreadsheet by displaying the spreadsheet data corresponding to the bin currently in focus in the overview. Finally, NOAH automatically creates contextual and historical information (Figure 1d and 1e) while displaying visual cues (Figure 1f and 1g) so that users don’t lose context during navigation.

The primary contribution of our work is twofold:

- We formalize the design of a general navigation (overview+detail) interface for exploration and analysis of large spreadsheets. We realize this design in the form of NOAH, a plugin to a spreadsheet tool, ensuring that interactions supported by NOAH complement existing spreadsheet operations.
- We conduct a user study to evaluate the benefits and limitations of this plugin. The study required users to perform tasks that were representative of popular spreadsheet operations, using both Microsoft Excel and NOAH. The study shows that compared to Microsoft Excel, participants were able to complete spreadsheet navigation tasks correctly and quickly in NOAH. Participants made 2.5× **fewer** mistakes while being 2× **faster** with a NOAH-integrated spreadsheet than with Excel.

## 2 NOAH USE CASES

Users prefer spreadsheets over enterprise solutions to view, explore, and analyze data [2], [3]. To understand the scope of typical user tasks on spreadsheets, we make use of the typology of abstract data exploration tasks [16]—see

Table 1. This typology characterizes the range of domain-independent tasks performed on visual representations of data, developed after analyzing task classification systems in over two dozen papers, and has been applied to a variety of scenarios, including developing models for visualization system design [17], designing task taxonomies for cartograms [18], and defining the scope of tasks in a number of domains, *e.g.*, interactive task authoring [19], document mining [20], multivariate network analysis [21], mass cytometry [22], among others. While all the tasks in Table 1 can be performed using spreadsheets, NOAH enhances the experience for many of these tasks, indicated by a checkmark (✓). We describe these tasks in the context of a real usage scenario for NOAH below.

TABLE 1

Example use cases where NOAH provides benefits beyond spreadsheets (labeled by ✓ if improved; × if it remains the same), employing Brehmer and Munzner’s typology [16].

Purpose	Use Cases
Consume	discover (✓: <i>generation of hypotheses</i> , <i>e.g.</i> , Rebecca finds a trend in larger cities and wants to check if it is present in smaller cities), present (✓: <i>communication of information</i> , <i>e.g.</i> , Rebecca sees the overall availability trends in the context of raw listings, and can present this view to her co-workers), enjoy (✓: <i>casual encounters with visualization</i> , <i>e.g.</i> , Rebecca uses the overview “at a glance” to understand which cities are present in the dataset, and how many listings are present per city)
Search	explore/browse (✓: <i>searching based on characteristics where location is unknown/known</i> , <i>e.g.</i> , Rebecca tries to find Chicago listings with availability greater than 60 days), locate/lookup (✓: <i>searching based on entities where location is unknown/known</i> , <i>e.g.</i> , Rebecca wants to find all entries corresponding to a given city like Chicago)
Query	identify (✓: <i>returning the characteristics of entity found during search</i> , <i>e.g.</i> , Rebecca wants to examine Chicago listings to assess typical availabilities of listings in Chicago), compare (✓: <i>returning characteristics of multiple entities</i> , <i>e.g.</i> , Rebecca wants to compare listing patterns in Boston to that of Chicago), summarize (✓: <i>returning characteristics of several entities</i> , <i>e.g.</i> , Rebecca wants to gain an understanding of overall rental patterns across cities)
Produce	export/save (×), generate/record (✓: <i>generation or recording of new information</i> , <i>e.g.</i> , Rebecca issues an aggregate formula to generate summary availability statistics across cities)

We now describe a usage scenario that illustrates the benefits of integrating NOAH into typical spreadsheets. Let’s assume that Rebecca, a journalist, is exploring the *Inside Airbnb* dataset [23], a dataset of all the Airbnb listings across different US cities. This dataset was created to investigate the long-standing accusation that many listings in Airbnb are illegally run as hotel businesses, while avoiding taxes; any listing available for rent for more than 60 days a year is considered to be operated as a hotel [24].

Given that this is the first time she’s examining this dataset, Rebecca wants to first gain a bird’s eye view of the data. Without NOAH, Rebecca would have had to use a pivot table (discussed in Section 3) to construct a summary—however, since this summary is disconnected from the underlying data, it is hard for Rebecca to map the summary statistics to the raw data to obtain further details about listings from any given city. If she wanted to examine listings from a specific city, Rebecca would have to either use search capabilities or perform an explicit filter for this information, and would have to switch back and forth between the pivot table results and the raw listings, present at disparate locations on the spreadsheet. Even at the first step of exploration, Rebecca would experience *substantial cognitive burdens, loss of context, and visual discontinuities*, with subsequent steps becoming progressively more challenging.

Using NOAH, she organizes the overview by city and starts casually exploring the dataset, understanding which cities are present, and roughly how many listings does each city have—with NOAH providing a high-level overview of cities (Figure 1a) (*enjoy*). The overview consists of sorted non-overlapping bins containing one or more cities. She can click on any bin and the corresponding data will be displayed at the top of her screen. For example, clicking on the *Ashville-Boston* bin displays the Ashville listings (Figure 1c); she can similarly find and examine properties of the Chicago listings by clicking on the *Chicago-Denver* bin (*locate* followed by *identify*). She can also zoom into bins using the “)” arrows, zoom out of bins using the “(” arrows, and pan by clicking on various bins at the same level. We discuss the construction of the overview and associated interactions in Section 5.

Next, say Rebecca wants to analyze one of the larger cities to understand the overall renting pattern (*summarize*). She studies a few cities at a time, examining and comparing the number of listings for each city, as displayed on the overview (*compare*). She decides to focus on Boston, her hometown, and wants to find out how many listings in Boston violate the “rent availability > 60 days” condition (*identify*). In a typical spreadsheet, Rebecca needs to manually steer and then select the Boston listings as input to a COUNTIF formula that counts the number of rows that satisfy the above mentioned condition. Using NOAH, she can zoom into the *Ashville-Boston* bin (Figure 2a and 2b) and then issues a COUNTIF operation on the overview (*generate*). The result is displayed as an *aggregate column* alongside the overview (Figure 1b). Rebecca learns that more than half of the listings in Boston are effectively operating as hotels (*discover*)—a large number!

Based on this insight, Rebecca then wants to understand availability statistics for an even larger city, Chicago (*compare*). As she uses the overview to navigate to Chicago, NOAH automatically updates the aggregate column to the COUNTIF formula results for Chicago (*identify*), without Rebecca needing to reissue it by performing a cumbersome steering operation as in traditional spreadsheets. Rebecca learns that Chicago exhibits a similar renting pattern as Boston, with more than half the listings operating as hotels. She can then hypothesizes that this trend may hold for all large cities, and can check whether the smaller cities have a different pattern (*discover*). Note that, the rows that satisfy the “rent availability > 60 days” condition, are listed in the spreadsheet adjacent to the overview in sky blue (Figure 1g) (*explore*). With the raw data presented side-by-side, she can also dive into other attributes of the listings operating as hotels to see if there are any other identifying characteristics, *e.g.*, if they are all managed by a small number of agencies acting as individual renters (*identify*).

Finally, as Rebecca navigates the data, her navigation history (Figure 1d), *i.e.*, recently visited cities, and current navigation path (Figure 1e) are kept up-to-date, allowing her to maintain context during navigation (*record*). She can revisit any previously visited cities (*lookup*) by simply clicking on the relevant path in the navigation history.

Overall, with NOAH, users can quickly comprehend the data via the overview, access any region within the data without having to scroll endlessly, and request additional

details on demand without having to steer across multiple screens. As users navigate and analyze the data, they can revisit previously accessed data via the navigation history, not losing context of what they have explored.

### 3 RELATED WORK

We now discuss tools and techniques that partially address the limitations of navigating data, both inside and outside spreadsheets.

#### 3.1 Spreadsheet Tools and Prototypes

Both commercial spreadsheet tools as well as academic prototypes provide partial solutions to navigational challenges.

**Microsoft Excel.** Excel enables users to manually create references to a spreadsheet region using the named ranges [25] feature, accessible from the menu bar. Users can click on a named range to navigate to the referred region. However, the onus is on the user to create named ranges for each region of interest. The pivot table [26] feature allows users to create a summary view to compare subsets of data without having to provides a summary view, enabling users to compare subsets of data without having to navigate to various locations within the sheet. This summary is placed in a separate region of the spreadsheet, preventing users from accessing the data underlying the summary, impeding navigation. A similar overview feature, `SUBTOTAL` [27], adds a new row at the end of each distinct subset of data with summary information. Users can expand the summary to view the actual spreadsheet data. However, for datasets with many subsets (*e.g.*, for numeric data), the number of new lines inserted (*i.e.*, the summary) can itself become very large, spanning multiple screens, and can cause increased visual discontinuity during navigation. Finally, NodeXL [28] is a plug-in that provides a spreadsheet network overview and supports navigational operations, *e.g.*, zooming in/out, dynamic filtering, on the overview; this plug-in only supports network datasets, such as biological or social networks.

**Google Sheets Explore.** Google Sheets Explore [29] provides an overview of the data by auto-generating charts of data statistics. Users can specify queries to the tool (similar to a web search) asking for different summary statistics. While Explore is a convenient means to understand high-level data characteristics, it doesn't address the navigational challenges related to scrolling and steering.

**Scalable Spreadsheet Summarization and Exploration.** Smart-drill-down [30] generates an interactive summary of a large spreadsheet table as a collection of rules; users can drill-down to a specific rule to view more fine-grained rules. Hillview [31] displays the approximate results of group-by queries on large spreadsheet tables. While these tools support summarization at scale, providing an overview of the spreadsheet, they don't preserve spreadsheet semantics, nor do they make it easy to scroll or steer through large spreadsheets. ABC [32] and DATASPREAD [33] support interactive exploration of very large spreadsheet datasets, beyond main-memory limits, maintaining spreadsheet look-and-feel, but do not provide any new spreadsheet capabilities to assist with navigation. We build NOAH as a plugin to DATASPREAD, since it is open-source.

**Interactive Tables.** TableLens [34] is a focus+context view for browsing numerical information in tables, looking much like a spreadsheet with embedded bar charts. Cells out of focus display graphical bars proportional in length to the underlying values, providing a visual overview of the data, while cells within the user's current focus are magnified and display the graphical bars and the raw data. Ideas similar to TableLens have been adopted by DataLens [35] for visualizing digital calendars, and by FOCUS [36] and InfoZoom [37] for exploring database query results. Like TableLens, NOAH embeds graphical bars, but within the overview to depict the underlying data distribution. NOAH captures the user's current focus by highlighting the corresponding bin in the overview. While TableLens provides an easy mechanism to get a high-level view of the data and spot outliers, it suffers from the same disadvantages that focus+context views have relative to overview+detail ones. Unlike NOAH, which supports multiple granularities via binning, TableLens only supports one granularity (zoomed in or zoomed out): beyond a certain size, navigating (scrolling or steering) the zoomed out data is still cumbersome for users. Moreover, TableLens does not maintain the spreadsheet look-and-feel or capabilities.

**Visual Interactive Spreadsheets.** VisSh [38], SI [39], SSR [40], ASP [41], and PhotoSpread [42] extend the input/output capabilities of cells within spreadsheets, to display charts, animation, photos, or geometric objects, or accept input via direct manipulation dialogs, among others. While these tools allow users to represent and manipulate data in a more flexible manner, which in turn could help users getting a high-level sense of the data, they do not necessarily help users navigate data more effectively.

#### 3.2 Spreadsheet Alternatives

We draw from work on navigation interfaces in non-spreadsheet interfaces as well.

**Overview+Detail Interfaces.** Cockburn et al. [11] provides a detailed survey of overview+detail and zooming interfaces. To improve navigation within large documents, overview+detail interfaces [43], [44] allow users to interact with an overview as they explore the document. Zooming interfaces [45], [46] provide a multi-granularity overview of the data and support interactions like zoom in/out to navigate across various granularities. We follow the same analogy of providing an overview of the spreadsheet first, allowing users to drill-down further.

**Multiple Coordinated Views.** Multiple coordinated views [47], *e.g.*, Snap [48], Elastic Documents [49] connect multiple views, for example, an overview and a detailed data view while enabling coordination between these views through brushing and linking. Similarly, NOAH connects spreadsheets with an overview and updates the spreadsheet as users interact with the overview and vice-versa.

**Tabular Data Analysis (TDA).** Visualization tools such as Tableau [50], Power BI [51], Keshif [52], Voyager [53] and analytical tools such as SPSS [54], SAS [55], can all provide summaries of tabular data in various forms (visualizations, aggregate statistics). These summaries are static overviews of the data—much like pivot tables, these summaries are

not dynamically linked to nor are co-located with the underlying raw data. For example, Keshif [52] can display all the unique values corresponding to an attribute of interest, *e.g.*, cities of the Airbnb data [23]. However, users cannot view or inspect the raw data corresponding to each city in a spreadsheet-like tabular setting, while being able to edit this raw data at will. With TDA tools, the spreadsheet look-and-feel is lost, and as a result, users lose the ability to directly manipulate raw data, derive new data, and issue formulae for free-form analysis. Therefore, the goals of spreadsheets differ from TDA tools in two ways: a) facilitating direct manipulation of raw data in-situ and b) enabling arbitrary derivation of new data and summaries using various operations involving navigation, *e.g.*, issuing formulae. NOAH being a plug-in to spreadsheets, provides a unified interface that upholds both these goals while enhancing navigational capabilities for spreadsheet users.

## 4 NOAH: DESIGN CONSIDERATIONS

In this section, we outline our design considerations for a spreadsheet navigation interface. Our design considerations were informed by prior work on information visualization [16], [56], overview+detail interfaces [11], multiple-coordinated views [57], and refined through our experiences across multiple design iterations.

**DC1. Construct the overview in-situ.** An overview helps users get a high-level picture of the data. However, maintaining the overview in a separate location from the data can lead to loss of context; instead, having it co-located with the data can help users make rapid glances to explore information between a bird’s-eye view and a close-up detail [13].

**DC2. Ensure reduced visual discontinuity while providing details on demand.** Users often need to access subsets of data, and study their properties in detail, *e.g.*, via steering. Navigating back and forth between different subsets of data can lead to increased visual discontinuity. The interface should allow users to compute such details for various data subsets on demand [56]. The interface should maintain visual continuity as users navigate to a different subset, recomputing the details for the new subset.

**DC3. Balance the screen space afforded to the overview.** As the overview has limited screen-space available, we need to consider the trade-off between visual discontinuity (DC2) and clarity. Displaying a fine-grained overview improves visual clarity while increasing visual discontinuity—users need to scroll through the overview to access distant subsets of data. Displaying a coarse-grained overview decreases visual discontinuity at cost of reduced visual clarity—the overview may span too many data subsets and appear visually cluttered. The interface should further allow users to control the screen-space allocated to the overview.

**DC4. Enable coordination between the spreadsheet and overview.** Since users can view the overview and the spreadsheet simultaneously, interactions on both need to be linked [47], *i.e.*, an interaction on one should be reflected on the other [57]. For example, as a user scrolls through the spreadsheet, the user’s current focus should be highlighted on the overview. However, not all interactions need to be interlinked, *e.g.*, changing the font size of a spreadsheet cell need not lead to a change in the overview.

**DC5. Facilitate customization of the overview.** As the overview is automatically generated, it may not reflect domain-specific context known only to the user [32]. For example, an overview constructed on a grading spreadsheet by binning nearby scores may not match the letter grade ranges that the instructors have in mind. Allowing users to customize the overview is therefore essential.

**DC6. Display contextual and historical navigation information.** The interface should record navigation history, allowing users to revisit previously visited locations [56], while also displaying their current navigation path for context.

## 5 USER INTERFACE

We now explain the design of NOAH’s components and implementation details.

### 5.1 In-situ Overview

NOAH constructs the overview in-situ (DC1) next to the spreadsheet on an attribute of the spreadsheet dataset called the *navigation attribute*, selected by the user. Any attribute type that can be ordered can be a navigation attribute, *e.g.*, text, numbers. The overview is constructed at multiple granularities. Each granularity is divided into non-overlapping groups of data called *bins*. As shown in Figure 2d, an overview of the Airbnb data on the navigation attribute “city” has granularity levels. The highest (coarsest) granularity level consists of four bins. Figure 2a depicts the first four bins, the first of which is *Ashville-Boston*. Each bin contains summary information regarding the data subset/region it spans, *e.g.*, starting row and ending row number, and the total number of rows the region spans. Each bin displays an overview of the next (finer) granularity (if any) with embedded bar charts. For example, in Figure 2d, the topmost bin (*Ash-Bos*) spans three cities (*Ashville, Austin, Boston*), each of which is a bin in the next (finer) granularity. Correspondingly, Figure 2(a) shows three horizontal bar charts for the first *Ash-Bos* bin, one for each bin in the next granularity. Since the third bin from the top (*LA*) spans only one city, no bar chart is embedded. Users can perform different operations on the bins, *e.g.*, clicking to pan and semantic zooming in/out [14]. NOAH supports other interactions atop this multi-granularity overview, *e.g.*, customization and aggregation. We discuss these interactions in the context of our design considerations in Section 5.1.1.

**Why a Multi-granularity Binned Overview?** A conventional design for overviews within popular interfaces is as a spatially partitioned collection of thumbnails on the left of the standard detailed view, similar to Microsoft Power Point or Adobe Reader. However, displaying too many thumbnails results in increased scrolling to access distant thumbnails, increasing visual discontinuity. On the other hand, displaying too few thumbnails reduces visual discontinuity, but at the cost of visual clarity—the thumbnails appear cluttered and fail to represent the underlying data clearly [11]. To strike a balance between these two objectives (DC3) we designed a multi-granularity overview that abstracts the data at varying levels of detail. Multi-granularity representations have been shown to scale better to larger



datasets—presenting information at multiple granularities makes visual representations more perceptually scalable and less cluttered [58]. Thus, the multi-granularity overview of NOAH provides an alternative to the aforementioned conventional spatially partitioned single-granularity representation of the data space, *e.g.*, in Power Point, by allowing users to control the scale at which the overview should be displayed [11]. Users can resize the overview to control the amount of spreadsheet data that remains visible. Users can also hide the overview if required.

The data structure underlying the overview is a histogram constructed on the values in the navigation attribute column. Histograms result from *binned aggregation*—consecutive data points are grouped into bins (or groups), where each bin represents a collection (group) of data points and is associated with a count aggregate, capturing the number of data points that fall in that group. In addition to providing high level (*e.g.*, densities) and low level (*e.g.*, outliers) details, binned aggregation techniques enable a multi-granularity visual representation of data by varying the bin size and have therefore been deployed in interactive visualization of large scale datasets, *e.g.*, in *imMens* [59]. An additional benefit of a binned overview for spreadsheets is a decrease in visual discontinuity during navigation. As users are able to view an overview that fits in the computer screen, they can quickly navigate the data—the bins act as landmarks in the overview, enabling users to skip irrelevant bins and quickly navigate to the desired subset of data. We now discuss how the overview is constructed.

**Overview Construction.** To generate the overview, we construct an equi-histogram. Equi-depth histograms are commonly used for summarizing statistical properties of data, with applications in database systems for query optimization and approximate query processing [60] and in data mining applications for distribution fitting in data streams [61], among others. The equi-depth histogram can be constructed on any data types that can be ordered, *e.g.*, text, numbers, dates. For example, in the usage scenario explained in Section 2, the journalist grouped the data into cities for ease of navigation when exploring the larger cities in the Airbnb dataset. Each bin in the equi-depth histogram contains the same number of items, where each item is a value. For example, when constructing the overview on city, each value in the city column is assigned to a bin. The bins are constructed top-down (see Figure 2d). NOAH divides each of the bins at level  $k$  into new bins to construct the next lower level  $k + 1$ , again, by applying the same concept of equi-depth histograms. If each value of the navigation attribute column was unique, *e.g.*, if it was a numerical ID, then construction of the histogram would be easy: each bin of the equi-depth histogram would contain almost the same number of items, where each item corresponds to one unique value of the attribute. Unfortunately, in practice, for many attributes, the same value is often repeated. For example, there are multiple listings per city. Therefore, an equi-depth histogram on the attribute city will result in consecutive bins sharing items of the same unique city value, resulting in undesirable overlap. Instead, we construct a best effort equi-depth histogram that is as close to an equi-depth histogram as possible, while ensuring that the ranges

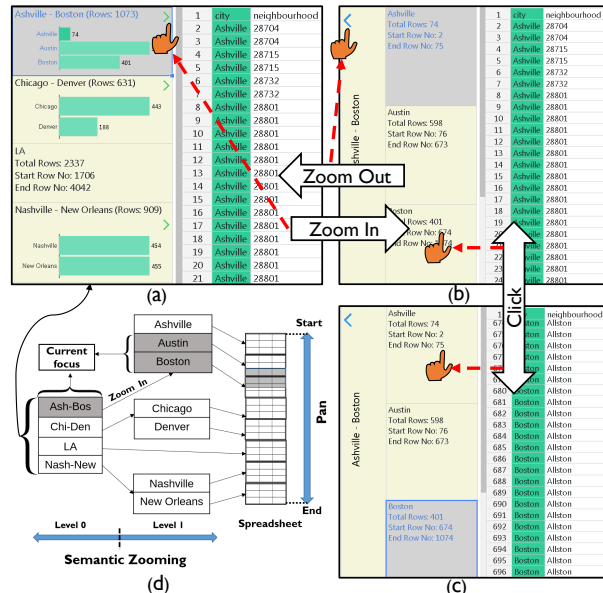


Fig. 2. Navigational operations. (a) The overview at the highest level of granularity. (b) A zoomed-in view of the *Ashville-Boston* bin. (c) As the user clicks on the *Boston* bin, the *Boston* listings are displayed on the sheet. The *Boston* bin is highlighted in gray to indicate users current focus. (d) Conceptualizing the multi-granularity overview. represented by each bin have no overlap.

### 5.1.1 Operations and Interactions

We now discuss the operations and interactions that can be performed on the overview.

**Navigational Operation: Clicking.** When a user clicks on a specific bin, NOAH displays the corresponding spreadsheet data; users can use this to jump to a specific spreadsheet location without having to scroll endlessly. For example, in Figure 2b, as the user clicks on the *Boston* bin, the data corresponding to Boston is displayed (Figure 2c). Note that the click operation is different from the traditional spreadsheet *Filter* operation. *Filter* hides spreadsheet data that do not satisfy the filtering condition while clicking brings the desired subset of data in view without hiding the rest. Users are free to navigate to other portions through scrolling even after clicking a bin, unlike filtering, where users need to issue another *Filter* to bring other data into view.

**Navigational Operation: Semantic Zooming.** Users can zoom into a specific bin to view more fine-grained information or zoom out to view more coarse-grained information, via semantic zooming [14]. For example, in Figure 2a, from the bin *Ashville-Boston* when the user zooms in to the next level, NOAH displays the bins *Ashville*, *Austin*, and *Boston* (Figure 2b). If the user zooms out of the current granularity, again NOAH displays the bins *Ashville-Boston*, *Chicago-Denver*, and others. Users can only zoom into any bin that contains multiple unique values. For example, in Figure 2d, at level 2, each bin corresponds to one city. Therefore, users can only click on those bins to bring that data into view, and cannot zoom in further. One issue with zooming interactions is discoverability of the zoom operation [11]. We circumvent this (see Figure 2c) by providing the root of the bin under selection for zoom out, and arrows for clicking to zoom in (“”) and out (“”).

**Customizing the Overview.** As NOAH constructs the overview automatically, the overview binning or organiza-

tion may not capture domain-specific context or user needs. NOAH enables users to customize this organization (DC5). At any granularity, users can merge multiple consecutive bins into a single bin, or split a bin into multiple bins. Say the user wants to compare summary statistics of Boston and Chicago. In the current organization these two cities are in two different bins (see Figure 3a). Using the bin customization feature, the user can merge the two bins *Ashville-Boston* and *Chicago-Denver* to create a new bin *Ashville-Denver*. Users can now zoom into this bin and compare summary statistics of the cities in the same view. The interactions for splitting a bin depend on the data type. If the navigation attribute is textual, any bin can be split into as many bins as the number of unique values that bin contains. If the navigation attribute is numeric, users can split the bin into any arbitrary number of bins. Note that NOAH does not allow users to rearrange the order of the bins. Since the overview represents a histogram, the bins are ordered—reshuffling the bins violates that order.

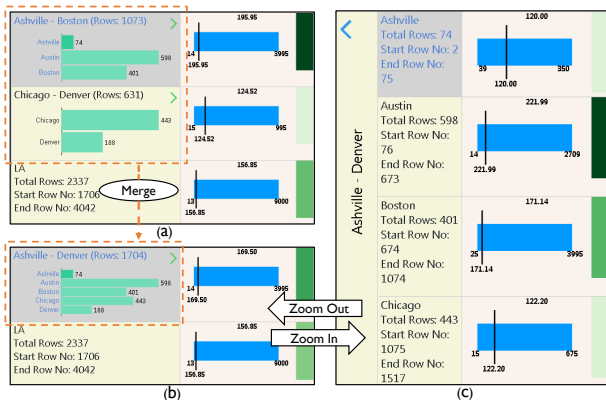


Fig. 3. (a) Chart view of the aggregate column. (b) A new bin is created by merging the top two bins. (c) Zooming into the newly created bin.

### 5.1.2 Coordination Between Overview and Spreadsheet

NOAH supports coordination between the overview and the corresponding spreadsheet data (DC4), *i.e.*, interactions on the overview may be reflected on the spreadsheet and vice-versa. One example of this coordination is indicating the navigation attribute on the spreadsheet using color (see the lime green column in Figure 1c) as user constructs the overview. However, not all overview interactions are coupled with the spreadsheet and vice versa. The coupling depends on the user’s current focus—to ensure consistency between the overview and the spreadsheet, any interaction on either interface that changes the current focus must be reflected on the other interface. We now provide examples of both coupled and decoupled interactions.

**Coupled interactions.** Clicking a bin is an example of a coupled interaction as the user actively changes the focus to another bin on the overview. To reflect the change, NOAH populates the corresponding spreadsheet data on the screen. As the user scrolls on the spreadsheet, again the current focus changes and the corresponding bin on the overview is highlighted. For example, in Figure 2c, as the user clicks on the Boston bin, the spreadsheet displays the Boston listings. Conversely, as the user scrolls up, both Austin and Boston listings appear in the current window of the spreadsheet. Therefore, both the Austin and Boston overview bins are highlighted (see Figure 2d).

**Decoupled interactions.** When a user zooms into a bin that is already in the user’s current focus, the spreadsheet view does not change. For example, in Figure 2a, the user zooms into the *Ashville-Boston* bin; here, the spreadsheet view stays the same (see Figure 2b). Similarly, the zoom out operation is decoupled. When a user zooms out, the overview displays a coarser granularity view of the user’s current focus. Since the focus stays the same, there’s no need to update the spreadsheet view. Similarly, operations like panning on the overview without clicking, and customizing the overview do not change user’s current focus and are therefore decoupled. Online maps also adopt similar decoupling of the overview and detail [11]. However, their goal is to reduce network and computational overload, whereas in our case, the decoupling is based on the user’s current focus.

## 5.2 Aggregate Columns

Users can issue spreadsheet formulae on the overview to compute aggregates for the data in each bin. The results are displayed as an *aggregate column* (see Figure 1b). Each entry in the aggregate column corresponds to the adjacent bin in the current granularity of the overview. For example, in Figure 3c, the aggregate column displays four aggregate statistics, one per bin. Users can issue several formulae simultaneously, each giving rise to a new aggregate column. However, adding an aggregate column takes up screen space, shrinking the spreadsheet view. As a workaround, users can resize or remove aggregate columns if required (DC3). When the user issues a formula on the overview, the spreadsheet column corresponding to the aggregate column is highlighted in grayish orange (see Figure 1c)—another example of coupled interaction. For conditional formulae like `COUNTIF`, cells that satisfy the condition are highlighted, *e.g.*, in Figure 1c, the cells with availability  $\geq 60$  are colored in sky blue. In this manner, users can quickly determine which cells are relevant to the aggregation operation.

Creating an aggregate column on the overview mimics how users create pivot tables. Users are not required to explicitly type formulae; rather they simply select the formula from a drop-down menu, and provide the necessary formula parameters to a form. The aggregate column can employ any statistical or mathematical formulae that operate over a range of data. Therefore, creating an aggregate column is equivalent to selecting subsets of data on the sheet, *i.e.*, steering, and then executing a formula on this subset, helping users avoid cumbersome steering operations. We have classified the formulae supported into five categories: a) summary (*e.g.*, min, max, average), b) frequency (*e.g.*, mode, large, small), c) conditional (*e.g.*, countif, sumif), d) spread (*e.g.*, var, stdev), and e) others (*e.g.*, sum, count).

Users can view the results either as raw values or as charts, and can toggle between the two. Raw values are displayed along with a colored bar, the *value bar*, whose length is proportional to the corresponding aggregate (see Figure 1b). Users can use the lengths to visually compare across bins. The chart representation varies depending on the formula type. All other categories except for the *others* category can be represented by charts. Figure 4 shows the chart representation for these categories along with different visual cues that highlight formula results as well as other



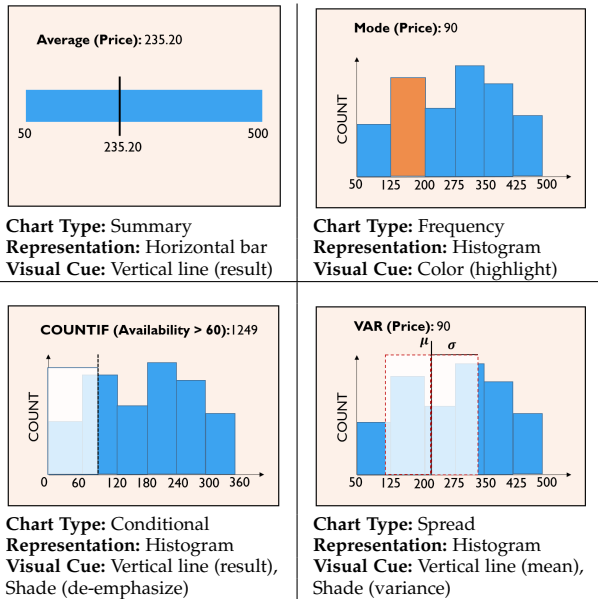


Fig. 4. Formula types and their chart representations.

information. We discuss these representations in detail in the Appendix.

Finally, we note that the aggregate column is kept in sync with the bins as users zoom in and out, eliminating repeated steering operations. NOAH does not maintain any additional data structure for the aggregate column. The histogram underlying the overview records the result of the aggregate column entries corresponding to the bins. Next, we discuss how NOAH maintains user’s navigational context.

### 5.3 Context Bar

The context bar consists of two components: a) a breadcrumb, and b) a navigation history. The breadcrumb [62] displays the current navigation path (see Figure 1e), thus maintaining the users’ navigation context (DC6). Each component of the breadcrumb corresponds to a bin in the user’s current navigation path. Therefore, users can visit any bins within the current navigation path by clicking on an appropriate component of the breadcrumb, without having to zoom in or zoom out. NOAH also maintains a list of recently visited bins (DC6) (see Figure 1d).

### 5.4 Implementation

We have integrated NOAH with DATASPREAD [33], a web-based spreadsheet. The DATASPREAD back-end maintains the histogram data structure and supports the aggregate column computation via its built-in formula engine. The NOAH front-end is built with HTML/CSS/JS technologies along with the D3 framework [63] for generating charts. We explain the NOAH architecture in detail in the Appendix.

## 6 EVALUATION STUDY DESIGN

In this section, we present the design of a user study to evaluate whether NOAH helps address spreadsheet navigational challenges.

### 6.1 Study Design and Participants

Our goal is to study the impact of an in-situ navigation plugin for spreadsheets, NOAH, on navigation and exploration of data. Therefore, we decided to compare a NOAH-integrated spreadsheet system with a typical, popular one, Excel, across various tasks. Similar domain specific-evaluations have been performed for evaluating various overview+detail interfaces, *e.g.*, database browsing [48] or tree navigation [64]. As explained in Section 3, the goals and user populations of spreadsheets and TDA tools are quite different. Therefore, we did not consider TDA tools for the comparative study. Our study was designed to answer the following questions:

- **RQ1.** How does the integration of an overview plugin like NOAH impact the efficiency of navigation within and the usability of spreadsheet systems?
- **RQ2.** How do the various components of NOAH impact users’ navigational experiences?

**Study Design.** We conducted a  $2 \times 2$  (2 datasets, 2 tools) mixed design within-subject study. The two tools used in the study were: Microsoft Excel, and NOAH integrated within DATASPREAD [15] (henceforth, referred to as NOAH for succinctness). As mentioned previously, we chose Excel for our comparative study because it is the most popular spreadsheet in use today. The study consisted of three phases: (a) an introductory phase explaining the essential features of NOAH via a video tutorial, followed by a warm-up session where participants explored a flight dataset [65] in NOAH to familiarize themselves with its features, (b) a quiz phase where the participants first used both the tools to perform targeted tasks on two different datasets (described later) followed by a survey to provide feedback on their impressions about Excel and NOAH, and (c) a semi-structured interview to collect qualitative feedback regarding the quiz phase.

**Datasets.** We used two datasets—the birdstrikes (used for evaluating visual data exploration tools like Keshif [52] and Voyager [53]), and the Airbnb [23] datasets. These datasets were chosen for their understandability to a general audience. The birdstrikes dataset records instances of birds hitting aeroplanes in different US states. The dataset has 10,868 records and 14 attributes (eight categorical, one spatial region, one temporal, four numeric). The Airbnb dataset was larger than the birdstrikes dataset. To ensure a fair comparison across tools, we created a sampled version of the original Airbnb dataset with 10,925 records, by uniformly sampling 10% of the records from each US city. This dataset contained 15 attributes (six categorical, two spatial region, one temporal, six numeric).

**Participants.** We recruited 20 participants (11 female, 9 male) via flyers across the university and via a university email newsletter. The average age of the participants was 31.06 years ( $\sigma = 12.44$ ). The participants came from different backgrounds, *e.g.*, engineering (seven), business (five), administration (five), and natural science (three). During recruitment, prospective participants filled out an interest form where they answered questions about their spreadsheet expertise, their typical goals when using spreadsheets, and the spreadsheet operations they typically use. Partic-

participants were asked to rate their expertise with different spreadsheet systems, *e.g.*, Excel and Google Sheets, and their frequency of using various spreadsheet tasks *e.g.*, data management, data analysis, statistical modeling, and what-if analysis. We also asked participants about their familiarity with basic mathematical and statistical spreadsheet functions, as well as advanced operations, *e.g.*, pivot table, SUBTOTAL, and conditional formatting. To ensure that prior experience with spreadsheets didn't affect the performance of participants during the quiz phase, we only recruited participants who rated their experience with Excel to be greater than four on a scale of one (no expertise at all) to five (very experienced). The selected participants were familiar with performing various tasks on spreadsheets, *e.g.*, maintaining, tracking, and analyzing data, making predictions, and performing comparisons. All of the participants were familiar with the basic mathematical and statistical functions supported by Excel. Each participant received \$10 per hour at the end of their session.

## 6.2 Study Procedure

We now explain each of the phases of our study in more detail.

**Phase 1: Introduction to NOAH.** We began the study by showing a six-minute video tutorial explaining the features of NOAH on a dataset of all the flights across the US for January 2018 [65]. The participants then explored the same dataset using NOAH to familiarize themselves with the tool for about 10 minutes. The quiz phase began as soon as the participants finished their exploration.

TABLE 2

Quiz tasks for the birdstrikes dataset. The task purposes and use cases correspond to the task typology discussed in Section 2.

Category	Question (Q), Purpose (P), Use case (U)
steer	Q: Organize the data by State. How many flights that had damages (damage = 1) originated from Florida?, P: <i>Search</i> → <i>Query</i> , U: <i>lookup</i> → <i>identify</i>
find	Q: How many flights in the currently visible spreadsheet window have damages?, P: <i>Search</i> , U: <i>browse</i>
steer	Q: Organize the data by State. How many flights that had damages (damage = 1) originated from California?, P: <i>Search</i> → <i>Query</i> , U: <i>lookup</i> → <i>identify</i>
compare (2)	Q: Which state between Florida and California has a higher number of flights with damages?, P: <i>Query</i> , U: <i>compare</i>
compare (N)	Q: Find the state with the most birdstrike occurrences, P: <i>Query</i> → <i>Search</i> , U: <i>summarize</i> → <i>locate</i>
customize	Q: Organize the data by <i>altitude</i> . What is the average cost of damages for altitude bin 0-450?, P: <i>Query</i> → <i>Search</i> → <i>Produce</i> , U: <i>generate</i> → <i>summarize</i> → <i>lookup</i>

**Phase 2: The Quiz Phase.** The purpose of the quiz phase was to evaluate the effectiveness of NOAH in addressing spreadsheet navigation limitations. During the quiz phase, each participant performed specific tasks on the two datasets in two sessions, using Excel for one and NOAH for the other. Each session was followed by a survey, described later. We alternated the order of the datasets between consecutive participants. The order of the tools was alternated between every two participants. We developed an online JavaScript-based quiz system that recorded user responses and submission times. We also recorded the participants' interactions with both tools using screen capture software. Participants were informed that they can refer to the Internet for help as many times as they wanted. However, due

to their familiarity with Excel, none of the participants required external help. For reference, we also provided a printed handout to the participants that contained screenshots with the features of NOAH.

**Quiz Tasks.** We designed six tasks across five categories: steer (two tasks), find (one task), compare (2) (one task), compare (N) (one task), and customize (one task), encompassing six of the seven task typology use cases underlying the *Search*, *Query*, and *Produce* purposes: *lookup/locate*, *identify*, *browse*, *compare*, *summarize*, and *generate* (see Table 1)<sup>2</sup>. These tasks were selected to mimic a typical spreadsheet analysis workflow and are representative of navigation interactions required for the most frequently issued spreadsheet operations [7], [8]. The tasks were presented in the same order as shown in Table 2 for the birdstrikes dataset. The tasks for the Airbnb dataset mimic a scenario similar to the example in Section 2. We explain the scenario in the context of the birdstrikes dataset next.

Say a user is interested in analyzing bird-strike statistics across US states. As the user is from Florida, she starts by computing bird-strike occurrences for that state (steer) and finds the number of occurrences to be quite high. After looking at the aggregate statistics, she decides to examine specific instances of bird-strike occurrences to inspect other attributes, *e.g.*, the altitude where the strike happened or the species of the bird (find). She notices a bird-strike occurrence at 50ft, which is surprising. She decides to investigate this issue later. For now, she focuses her attention on analyzing the state-wise statistics. She computes the same occurrence statistics for another large state, say California (steer) and then compares the statistics between the two large states (compare (2)). At this point, she becomes interested in learning the occurrence statistics across all states and in finding the state with the highest bird-strike occurrences (compare (N)). With the state-wise comparison completed, she decides to revisit low altitude bird-strikes. So she organizes the data by *altitude* and computes the occurrence statistics at low altitudes, along with the associated damages (customize). For this final task, the bins generated by NOAH did not correspond to the given altitude range and would require bin customization to compute the statistics.

**Survey.** After each session, participants rated the corresponding tool used on six metrics: confidence, comprehensibility, level of satisfaction, ease and speed of use, and ease of learning for spreadsheet navigation, on a Likert scale from one (*e.g.*, strongly disagree) to seven (*e.g.*, strongly agree). The survey asked multiple questions related to these metrics, 15 in total, to ensure reliability. Participants were also asked to describe the positive and negative aspects of both tools.

**Evaluation.** We evaluated the accuracy and completion time for each of the six tasks. We combined this analysis with qualitative survey, interview, and screen/audio recording data to provide insights that can be corroborated across multiple sources. Moreover, we analyzed the survey

2. We omitted the *export/save* use-case under the *Produce* purpose since NOAH is not targeted at improving that use case. We also did not study the *Consume* purpose so as to focus our evaluation on completion of tasks as opposed to an open-ended exploration setting, which is beyond the scope of our study.

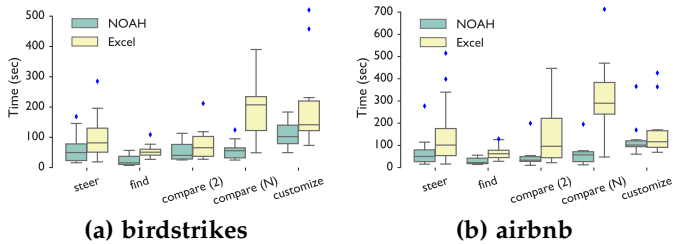


Fig. 5. Submission times per category for each dataset. Median submission times are much smaller for NOAH compared to Excel.

responses to quantify the usability of both Excel and the NOAH-integrated spreadsheet.

**Phase 3: Interview Phase.** Following the survey, we conducted a semi-structured interview to identify participants preferred tools for different tasks and to understand the reasoning behind their choices. We also asked participants to comment on the usefulness of different features provided by NOAH and Excel.

## 7 RESULTS

In this section, we analyze the quantitative and qualitative data collected during the quiz and interview phases to address our research questions.

### 7.1 RQ1. Impact of overview-spreadsheet integration on navigation performance and spreadsheet usability

To answer RQ1, we first compare task completion times and accuracies in NOAH and Excel and then analyze the survey responses that evaluate the usability of the tools.

#### 7.1.1 Faster navigation without sacrificing accuracy

In Figure 5a and 5b, we show the distribution of submission times of participants for the five task categories, for birdstrikes and Airbnb respectively. For most categories, participants' median submission times using NOAH were less than the fastest submission times using Excel. This observation suggests that the new capabilities offered by NOAH made spreadsheet navigation faster for these tasks. We analyzed the intra-participant differences in submission times, which also supported these observations: the majority of submission times using NOAH were faster than Excel—19 out of the 20 participants completed at least four tasks in less time using NOAH. The submission time differences were more prominent for the steer, find, and compare ( $N$ ) tasks. In Section 7.2, we explain these outcomes in detail. For example, the aggregate column feature provides a faster alternative to steering, the overview-spreadsheet coordination accelerates raw data inspection, and the binned overview coupled with the context bar enables faster comparison. The differences in submission times were statistically significant for all of the tasks except customize. Both the intra-participant differences and the statistical significance test results are discussed in detail in the Appendix.

In Figure 6a and 6b, we show the percentage of correct submissions for the four quiz task categories, for the birdstrikes and Airbnb datasets, respectively. For all the tasks except for the fourth task, compare (2), for which the

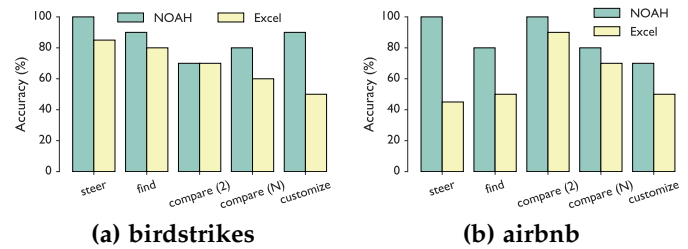


Fig. 6. Per category accuracy for each dataset. Participants attained higher accuracy while completing tasks in NOAH compared to Excel.

accuracy was the same for both tools, participants attained slightly higher accuracy with NOAH compared to Excel. However, the differences in accuracies were statistically significant for the steer tasks only (see Appendix). We evaluate the usability of Excel and NOAH next.

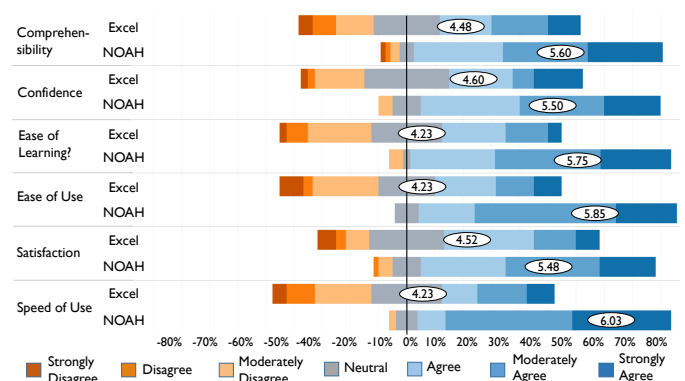


Fig. 7. Participants found NOAH to be easier to use compared to Excel while being faster in completing tasks involving navigation.

#### 7.1.2 Participants preferred NOAH to Excel

Figure 7 shows a diverging stacked bar chart representation of the survey results in which participants rated their experience with Excel and NOAH. For each metric mentioned in Section 6, there are two stacked bar charts, one for Excel and one for NOAH. Each component within a stacked bar represents the percentage of responses for the corresponding rating, where the ratings are on a scale of one one (strong disagreement) to seven (strong agreement). The average rating for each metric is represented with a white ellipse. Notably, NOAH had a higher average rating than Excel for all the metrics. The aforementioned observation was further validated by a statistical significance test—the *Wilcoxon Signed-rank Test* (see Appendix). In particular, participants felt that using NOAH was faster and easier compared to Excel.

### 7.2 RQ2. Impact of NOAH and its components on spreadsheet navigation experience

To answer RQ2, we assess how NOAH's components, *i.e.*, the binned overview, aggregate column, and context bar, impacted participants' navigation. For each observation, we present participant feedback from the interview phase.

### 7.2.1 Binned Overview: Customizable Hierarchical Organization

Overall, the binned overview prevented participants from being overwhelmed during navigation, especially at scale. Personalizing the overview enabled participants to define their own grouping of the data, resulting in a more meaningful overview presentation. However, the newer interactions at times deviated from spreadsheet semantics, contributing to a steeper learning curve.

**Overviews aid navigation at scale.** Participants found it difficult to perform various navigation tasks in Excel, especially at scale; NOAH, on the other hand, helped participants avoid endless scrolling via clicking and semantically zooming on the overview, and provided cues for what to explore next via the bins of the overview. One participant (P11) commented—“Excel can get overwhelming if you have a lot of data in it and sometimes with that data finding things can be difficult”. Participants ( $N = 6$ ) mentioned that they would prefer NOAH when the dataset is large: “If I just had a large amount of data then I would prefer to use NOAH because then you would be able to see all of it (bins) at once” (P2). NOAH’s binned overview helped participants comprehend the overall structure of the data better and prioritize the bin they want to visit next. One participant (P5) commented: “I think it was just a little bit easier to navigate and find where things were because you could already see what bins had what.” Another participant (P1) said: “I like NOAH a lot better. It was a lot easier to look up different data and it was a lot quicker too”.

**Overview customization enables related data to be analyzed together in task-specific ways.** Bin customization enabled participants to personalize the overview based on their specific needs. One participant (P16) commented: “I did like the fact that it lets you take a data sheet and, in some way, containerize the stuff you care and the stuff you don’t care about.” Participants (14 out of 20) preferred the feature to Excel’s filtering feature when working with numeric data—“That was so much easier in NOAH than it was in Excel to be able to specify the range that you wanted it to go in” (P17). Our analysis of the video recordings revealed that for the birdstrikes dataset in Excel, the customize task involved filtering out certain values from a total of 451 unique values. This manual filtering led to a significant delays in task completion, compared to NOAH where they were able to use the bin customization feature. However, the time taken for this task was higher than other tasks in NOAH, as it required participants to restructure the overview before any calculation could be performed.

**Overview customization interactions have a steeper learning curve.** Unfamiliarity with the interactions required during customization in NOAH also contributed to higher task completion times for the customize task compared to other tasks. The unfamiliarity led to some participants ( $N = 5$  out of 20) preferring Excel over NOAH for this task. One participant (P11) commented: “Since I’m not used to spreadsheet data being presented that way, it took a little bit of getting used to.” Participants found some of the terminology used in the interface—e.g., explore, bin—quite unfamiliar ( $N = 14$ ). Moreover, two participants didn’t understand how the bins were constructed and requested implementa-

tion details during the interview.

**Tradeoffs between hierarchical and flat overviews.** While participants generally appreciated the binned representation of the overview for numeric data, a number of participants ( $N = 6$ ) stated that they would have preferred a non-hierarchical overview for categorical data, where each bin corresponds to one item. One participant (P13) commented: “I would prefer it start with all the bins split, and then I can merge them as I want.” Another participant (P4) said—“When I started, it (NOAH) had already grouped them, I think, alphabetically. So, that creates an extra step in that I then have to go split them and then re-merge them.”

### 7.2.2 Aggregate Column: In-situ Steering-free Computation

The aggregate column feature enabled participants to avoid cumbersome steering interactions, resulting in faster and more accurate analysis compared to Excel. However, comparing the analysis results of more than two data subsets resulted in increased visual discontinuity and consequent errors.

**Cumbersome steering replaced by a few button clicks with aggregate columns.** The steer tasks required participants to issue a COUNTIF formula on a data subset. Participants found scrolling and steering in Excel to be cumbersome while issuing formulae—“The one thing with Excel is I always try to go to the bottom of the data and type in the formula, and with something really long like this, the scrolling is a little bit cumbersome” (P4). With NOAH, participants avoided steering by using aggregate column feature on the menu-bar and selecting the appropriate formula. Multiple participants ( $N = 13$ ) found it easier to issue formulae using this feature. One participant (P3) commented: “And that creates convenience sort of because then you don’t have to memorize anything and using the system becomes easier.” Another participant (P13) commented: “There were some formulas to calculate, that were definitely easier in NOAH because the aggregate column did all the work and showed me the results.” However, two participants found the aggregation operations applied on the bins to be opaque compared to Excel where a user can directly manipulate the formula.

**Issuing formulae is faster and more accurate with aggregate columns.** While the accuracies and submission times for the steer tasks in Excel varied significantly across datasets, using NOAH, participants exhibited higher accuracies and faster submission times irrespective of the dataset (see Figure 5 and 6). The automated and steering-free aggregate column feature of NOAH contributed to high accuracies (100%) for the steer tasks. One participant (P12) commented: “With NOAH, you don’t have to highlight every number versus Excel where you actually have to select everything.” All of the 14 inaccurate submissions with Excel involved steering an incorrect spreadsheet region; 11 of the inaccurate submissions were with the Airbnb dataset. In NOAH, participants were able to avoid steering by using the aggregate column feature. Analysis of screen recordings revealed that, for Excel, for the birdstrikes dataset, several participants used the *autosum* feature to quickly count the number of 1’s in the binary-valued column involved in the steering task. Summing up binary values is equal to the

number of 1's in the collection. Other participants used the status bar at the bottom of the spreadsheet that displayed the sum of the cells in the selected column. In both cases, participants avoided steering the data resulting in fewer errors. On the other hand, for the Airbnb dataset, participants could not use these shortcuts as the column involved in the steering task was non-binary (it had 365 different values). Failure to avoid steering often led participants to select an incorrect range of data ( $N = 14$  cases), resulting in incorrect responses. Therefore, the participants' ability to avoid steering depended on the data type.

**Visual discontinuity during comparison while reduced, was not completely eliminated.** For compare ( $N$ ) tasks, participants had to perform  $N$  comparisons in NOAH while issuing the aggregate column operation once. However, the comparison among  $N$  bins resulted in increased visual discontinuity. This led to some ( $N = 4$  out of 20) incorrect submissions. In Excel, the experience was worse, as the participants had to perform  $N$  separate steering tasks. As a result, in Excel, the compare ( $N$ ) task submission times were very high compared to compare (2) tasks (see Figure 5). In addition, the accuracies of the compare ( $N$ ) task in Excel were lower ( $N = 7$  out of 20 submissions were inaccurate).

### 7.2.3 History, Context, and Coordination

The context bar enabled participants to revisit previously explored bins. The aggregation results corresponding to that bin were automatically updated in the aggregate column, due to automatic syncing between the binned overview and aggregate column (see Section 5.2). The coordination between the overview and the raw spreadsheet data further helped participants relate the aggregate column results with the raw data.

**History helps avoid repeated interactions.** For the compare (2) task in NOAH, all of the participants used the context bar to navigate to a bin previously visited for the first steer task. As the bin currently being displayed was changed, the aggregate column was automatically updated to display values corresponding to that bin, enabling participants to view the aggregate column values instantly without having to reissue the operation. On the other hand, as Excel did not preserve any navigation history, participants had to re-execute the first steering operation. As a result, the submission times for compare (2) tasks were faster in NOAH compared to Excel (see Figure 5). One participant (P16) commented—*“Once I got familiar with the interface, it was easy to just say, I want to see this state, and I like that fact that like automatically it goes into the bins on NOAH, gave me summary information.”* Another participant (P9) said—*“Noah was easy to find and compare and toggle in between.”*

**Overview-spreadsheet coordination helps relate interactions on the overview with the raw data.** The coordination between the overview and spreadsheet in NOAH enabled users to quickly relate their interactions on the overview with the raw spreadsheet data. For example, for the find task, participants had to find all the cells within the spreadsheet that satisfy a condition corresponding to the preceding steer task. To do so, they had to skim through all the cells in the current window in Excel, resulting in higher completion times. Even though Excel supports a conditional formatting

feature<sup>3</sup>, issuing the feature added one additional step when performing the find task. In NOAH, participants benefited from having visual cues in the form of automatically colored cells, helping them relate the aggregate column with the raw data—*“You didn't have to do any additional steps and it was a visual cue right there, made it very quick to count it up (P17).”* Another participant (P9) commented—*“In Excel, you would have to add your own condition for formatting. But you have to build that (conditional formatting) every time you need to ask a question. This one (NOAH) at least something is pre-built in, and you can easily count.”* However, one participant (P3) pointed out that, when the data corresponding to the bin does not fit in the screen, they had to scroll through to identify relevant information.

## 8 DISCUSSION AND CONCLUSION

NOAH represents our first step towards a general purpose spreadsheet navigation plug-in to make spreadsheets more effective when exploring datasets that are increasingly the norm. Using NOAH, users can get a bird's eye view of the data, with the ability to scroll or seek additional details on demand via a multi-granularity overview, as well as employ aggregation in-situ, which eliminates cumbersome steering operations. Quantitatively, we find that NOAH speeds up navigation without compromising accuracy. Qualitatively, study participants identify it as positively impacting their experience while overviewing and navigating large datasets, and issuing formulae. However, the user study revealed some limitations of NOAH. Moreover, the study design itself had some limitations. In this section, we discuss these limitations and propose extensions to address these limitations as well as enhance the capabilities of NOAH.

### 8.1 User Study Limitations

Our study has a few limitations that can be strengthened by future larger-scale and finer-grained studies.

**Insufficient coverage of participant demographics.** Our participant pool demographics only partially represents the demographics of the general audience intended for NOAH. A larger sample with more participants with a range of skill-sets and backgrounds that better represents the spreadsheet user population would have provided more ecological validity to generalize our findings.

**Lack of targeted comparisons with advanced spreadsheet features.** We only compared the performance of a NOAH-integrated spreadsheet with a traditional spreadsheet. We did not evaluate specific spreadsheet features like pivot table and `SUBTOTAL` as they violate most of the design considerations proposed in Section 4; we discussed their limitations in Section 3. We instead allowed the participants to freely use any spreadsheet operations that they were comfortable with (including the advanced ones), enabling us to observe how introducing a plug-in like NOAH affected their navigation experience. However, a future study targeted at evaluating the pros and cons of these features for spreadsheet navigation would be valuable.

3. The conditional formatting feature in Excel enables users to request cells that satisfy certain conditions to be colored.



**Isolated evaluation of NOAH components.** While we did present the impact of various components of NOAH in Section 7.2, we did not isolate the effects of individual features during our study. For example, we did not study the effects of the binned overview (visual clarity versus visual continuity), display layout (screen space trade-off), and contextual presentation of data (raw text versus chart representation of aggregate columns) in isolation. A more fine-grained study that teases apart the contribution of individual components of NOAH is warranted.

## 8.2 Limitations of NOAH and Possible Enhancements

While we alluded to some limitations of NOAH in Section 7, we now discuss these in more detail and how we can possibly overcome them.

**Lack of transparency and documentation of new interactions.** Several operations in NOAH are quite different from typical spreadsheet interactions, *e.g.*, zooming or bin customization. Moreover, participants found some of the terminologies, *e.g.*, explore or bin, to be rather different from typical spreadsheet terminologies, which took some getting used to (see Section 7.2). In addition, some participants complained about the lack of explanation surrounding the overview construction and aggregate column computation. In the future, these issues can be addressed by using more relatable terminologies and improved documentation.

**Deviation from the spreadsheet look and feel.** A couple of participants (*P2* and *P11*) mentioned that the aggregate column results hides the actual spreadsheet formula and they would prefer some visual cues that highlight the corresponding formula underlying each bin. Subsequent versions of NOAH can display the appropriate formula for each bin as users hover over the corresponding cell on the aggregate column. The aggregate column feature can be further enhanced by enabling users to issue user defined formulae, a feature requested by a number of participants ( $N = 5$ ). Another feature that can be made more similar to spreadsheet interaction semantics is the bin customization operation. Currently, this operation in NOAH is performed from a menu bar, adding an additional step. The bin splitting and merging operations can be made more similar to how spreadsheet cells are split or merged—in Excel, these operations are direct and only require a single click. Similar direct adjustment of data grouping strategies have been explored for visualization tools [66] and can be adapted to this setting.

**Absence of bespoke overview representations for various data types.** The experience surrounding the construction of the overview can be further improved, especially for categorical data. Currently, the bins of the overview can be customized only after the overview is constructed. Providing the users the ability to select the representation (similar to bin customization) of the overview at the outset could have possibly addressed this issue. Understanding the impact of these representation choices for the overview is an interesting open question.

## 8.3 Additional enhancements

We now discuss other functionalities that can be introduced to further enhance the capabilities of NOAH.

**Broadening the scope of overview-spreadsheet coordination.** Spreadsheet users often perform various edit operations, *e.g.*, updating values, adding/deleting rows/columns. However, our current NOAH implementation assumes the data to be read-only. In our next version, we can add support for propagating spreadsheet updates to the overview. Moreover, the charts displayed in an *aggregate column* are non-interactive, *i.e.*, users cannot interact with the charts to visually look up relevant or interesting data points within the spreadsheet. In the future, we plan to extend NOAH to support visual querying through the charts in an aggregate column, similar to multi-modal linked selections in Keshif [52].

**Enabling more flexible overview binning.** NOAH currently constructs the overview on a single attribute. We can add support for multi-attribute navigation (*e.g.*, explore the Airbnb data by city and neighborhood), and multi-level navigation (*e.g.*, explore the neighborhoods after zooming into a specific city in the Airbnb data). Furthermore, bin customization currently supports changing the bin boundaries only, while maintaining the current order. Supporting user-defined ordering to allow arbitrary reshuffling of the bins can be another enhancement.

**Supporting other spreadsheet operations.** Spreadsheet operations that involve working with subsets of the data, *e.g.*, sorting, filtering, copy-pasting, can be supported by NOAH, but our current implementation does not support them. Future versions would support such operations as well. Other enhancements include adding annotations, *e.g.*, visual cues, text, to the overview and then exporting the customized overview for presentation or reporting—a required feature for information seeking tools [56].

**Supporting navigation for semi-structured data.** NOAH operates only on tabular data. However, spreadsheets can be semi-structured—formulae and text can be interspersed with tabular data. In such cases, NOAH can be used to support exploration and zooming for each such tabular region independently, supported by an overall overview (akin to a map-based panning tool) for users to select which tabular region they want to explore in detail. We can leverage existing work on spreadsheet table detection [67], and property identification [68] to support such extensions.

**Achieving interactive scalability beyond traditional spreadsheet limits.** The current version of NOAH addresses the perceptual scalability challenges while navigating Excel-scale (one million rows) data. As modern spreadsheets continue to support increasingly larger datasets—DATASREAD [33] supports one billion rows—the interactions proposed in this paper may violate the interactive response time bound of 500 ms [69]. This opens the door to a new set of research challenges that may range from approximate query processing to progressive data analytics.

## REFERENCES

- [1] “How finance leaders can drive performance,” <https://enterprise.microsoft.com/en-gb/articles/roles/finance-leader/how-finance-leaders-can-drive-performance/>.
- [2] Y. E. Chan and V. C. Storey, “The use of spreadsheets in organizations: Determinants and consequences,” *Information & Management*, vol. 31, no. 3, pp. 119–134, 1996.

- [3] N. Raden, "Shedding light on shadow it: Is excel running your business," *DSSResources.com*, vol. 26, 2005.
- [4] E. Bakke and D. R. Karger, "Expressive query construction through direct manipulation of nested relational results," in *Proceedings of the 2016 International Conference on Management of Data*. ACM, 2016, pp. 1377–1392.
- [5] B. A. Nardi and J. R. Miller, *The spreadsheet interface: A basis for end user programming*. Hewlett-Packard Laboratories, 1990.
- [6] D. V. Beard and J. Q. W. II, "Navigational techniques to improve the display of large two-dimensional spaces," *Behaviour & Information Technology*, vol. 9, no. 6, pp. 451–466, 1990.
- [7] D. A. Bradbard, C. Alvis, and R. Morris, "Spreadsheet usage by management accountants: An exploratory study," *Journal of Accounting Education*, vol. 32, no. 4, pp. 24–30, 2014.
- [8] B. R. Lawson, K. R. Baker, S. G. Powell, and L. Foster-Johnson, "A comparison of spreadsheet users with different levels of experience," *Omega*, vol. 37, no. 3, pp. 579–590, 2009.
- [9] J. Watts-Perotti and D. D. Woods, "How experienced users avoid getting lost in large display networks," *International Journal of Human-Computer Interaction*, vol. 11, no. 4, pp. 269–299, 1999.
- [10] "Google sheets limit," <https://support.google.com/drive/answer/37603>.
- [11] A. Cockburn, A. Karlson, and B. B. Bederson, "A review of overview+ detail, zooming, and focus+ context interfaces," *ACM Computing Surveys (CSUR)*, vol. 41, no. 1, p. 2, 2009.
- [12] R. R. Panko, "What we know about spreadsheet errors," *Journal of Organizational and End User Computing (JOEUC)*, vol. 10, no. 2, pp. 15–21, 1998.
- [13] J. Grudin, "Partitioning digital worlds: focal and peripheral awareness in multiple monitor use," in *Proceedings of the SIGCHI conference on Human factors in computing systems*. ACM, 2001, pp. 458–465.
- [14] K. Perlin and D. Fox, "Pad: an alternative approach to the computer interface," in *Proceedings of the 20th annual conference on Computer graphics and interactive techniques*. ACM, 1993, pp. 57–64.
- [15] "DataSpread," <https://dataspread.github.io/>.
- [16] M. Brehmer and T. Munzner, "A multi-level typology of abstract visualization tasks," *IEEE Transactions on Visualization and Computer Graphics*, vol. 19, no. 12, pp. 2376–2385, 2013.
- [17] M. Meyer, M. Sedlmair, P. S. Quinan, and T. Munzner, "The nested blocks and guidelines model," *Information Visualization*, vol. 14, no. 3, pp. 234–249, 2015.
- [18] L. McNabb and R. S. Laramee, "Survey of surveys (sos)-mapping the landscape of survey papers in information visualization," in *Computer Graphics Forum*, vol. 36, no. 3. Wiley Online Library, 2017, pp. 589–617.
- [19] J. Fulda, M. Brehmel, and T. Munzner, "Timelinecurator: Interactive authoring of visual timelines from unstructured text," *IEEE transactions on visualization and computer graphics*, vol. 22, no. 1, pp. 300–309, 2015.
- [20] M. Brehmer, S. Ingram, J. Stray, and T. Munzner, "Overview: The design, adoption, and analysis of a visual document mining tool for investigative journalists," *IEEE transactions on visualization and computer graphics*, vol. 20, no. 12, pp. 2271–2280, 2014.
- [21] J. Pretorius, H. C. Purchase, and J. T. Stasko, "Tasks for multivariate network analysis," in *Multivariate Network Visualization*. Springer, 2014, pp. 77–95.
- [22] T. Höllt, N. Pezzotti, V. van Unen, F. Koning, E. Eisemann, B. Lelieveldt, and A. Vilanova, "Cytosplore: Interactive immune cell phenotyping for large single-cell datasets," in *Computer Graphics Forum*, vol. 35, no. 3. Wiley Online Library, 2016, pp. 171–180.
- [23] "The inside airbnb dataset." <http://insideairbnb.com/get-the-data.html>.
- [24] "A Lone Data Whiz Is Fighting Airbnb—and Winning," <https://www.wired.com/2017/02/a-lone-data-whiz-is-fighting-airbnb-and-winning/>.
- [25] "Define and use names in formulas," <https://www.excel-easy.com/examples/names-in-formulas.html>.
- [26] "Pivot Table," [https://en.wikipedia.org/wiki/Pivot\\_table](https://en.wikipedia.org/wiki/Pivot_table).
- [27] "SUBTOTAL," <https://exceljet.net/excel-functions/excel-subtotal-function>.
- [28] D. L. Hansen, B. Shneiderman, and M. A. Smith, *Analyzing social media networks with NodeXL: Insights from a connected world*. Morgan Kaufmann, 2010.
- [29] "Google explore." <https://www.techrepublic.com/article/how-to-use-the-new-google-explore-feature/>.
- [30] M. Joglekar, H. Garcia-Molina, and A. Parameswaran, "Smart drill-down: A new data exploration operator," *Proceedings of the VLDB Endowment*, vol. 8, no. 12, pp. 1928–1931, 2015.
- [31] "Hillview." <https://github.com/vmware/hillview>.
- [32] V. Raman et al., "Scalable spreadsheets for interactive data analysis," in *ACM SIGMOD Workshop on DMKD*, 1999.
- [33] M. Bendre et al., "Towards a holistic integration of spreadsheets with databases: A scalable storage engine for presentational data management," in *ICDE*, April 2018.
- [34] R. Rao and S. K. Card, "The table lens: merging graphical and symbolic representations in an interactive focus+ context visualization for tabular information," in *Proceedings of the SIGCHI conference on Human factors in computing systems*. ACM, 1994, pp. 318–322.
- [35] B. B. Bederson, A. Clamage, M. P. Czerwinski, and G. G. Robertson, "Datelens: A fisheye calendar interface for pdas," *ACM Transactions on Computer-Human Interaction (TOCHI)*, vol. 11, no. 1, pp. 90–119, 2004.
- [36] M. Spenke, C. Beilken, and T. Berlage, "Focus: the interactive table for product comparison and selection," in *Proceedings of the 9th annual ACM symposium on User interface software and technology*. ACM, 1996, pp. 41–50.
- [37] M. Spenke and C. Beilken, "Visualization and analysis of formula one racing results with infozoom-the demo." in *INTERACT*, 2003.
- [38] F. Nunez and E. Blake, "Vissh: A data visualisation spreadsheet," in *Data Visualization 2000*. Springer, 2000, pp. 209–218.
- [39] M. Levoy, "Spreadsheets for images," in *Proceedings of the 21st annual conference on Computer graphics and interactive techniques*. ACM, 1994, pp. 139–146.
- [40] E.-H. Chi, P. Barry, J. Riedl, and J. Konstan, "A spreadsheet approach to information visualization," in *Information Visualization, 1997. Proceedings., IEEE Symposium on*. IEEE, 1997, pp. 17–24.
- [41] K. W. Piersol, "Object-oriented spreadsheets: the analytic spreadsheet package," in *ACM Sigplan Notices*, vol. 21, no. 11. ACM, 1986, pp. 385–390.
- [42] S. Kandel, A. Paepcke, M. Theobald, H. Garcia-Molina, and E. Abelson, "Photospread: a spreadsheet for managing photos," in *Proceedings of the SIGCHI conference on human factors in computing systems*. ACM, 2008, pp. 1749–1758.
- [43] A. Cockburn, C. Gutwin, and J. Alexander, "Faster document navigation with space-filling thumbnails," in *Proceedings of the SIGCHI conference on Human Factors in computing systems*. ACM, 2006, pp. 1–10.
- [44] S. Kratz, I. Brodien, and M. Rohs, "Semi-automatic zooming for mobile map navigation," in *Proceedings of the 12th international conference on Human computer interaction with mobile devices and services*. ACM, 2010, pp. 63–72.
- [45] D. Nekrasovski, A. Bodnar, J. McGrenere, F. Guimbretière, and T. Munzner, "An evaluation of pan & zoom and rubber sheet navigation with and without an overview," in *Proceedings of the SIGCHI conference on Human Factors in computing systems*. ACM, 2006, pp. 11–20.
- [46] C. Plaisant, J. Grosjean, and B. B. Bederson, "Spacetime: Supporting exploration in large node link tree, design evolution and empirical evaluation," in *IEEE Symposium on Information Visualization, 2002. INFOVIS 2002*. IEEE, 2002, pp. 57–64.
- [47] J. C. Roberts, "State of the art: Coordinated & multiple views in exploratory visualization," in *Coordinated and Multiple Views in Exploratory Visualization, 2007. CMV'07. Fifth International Conference on*. IEEE, 2007, pp. 61–71.
- [48] C. North and B. Shneiderman, "Snap-together visualization: can users construct and operate coordinated visualizations?" *International Journal of Human-Computer Studies*, vol. 53, no. 5, pp. 715–739, 2000.
- [49] S. K. Badam, Z. Liu, and N. Elmqvist, "Elastic documents: Coupling text and tables through contextual visualizations for enhanced document reading," *IEEE transactions on visualization and computer graphics*, 2018.
- [50] "Tableau software." <https://www.tableau.com/>.
- [51] "Microsoft power bi." <https://powerbi.microsoft.com/en-us/>.
- [52] M. A. Yalçın, N. Elmqvist, and B. B. Bederson, "Keshif: Rapid and expressive tabular data exploration for novices," *IEEE transactions on visualization and computer graphics*, vol. 24, no. 8, pp. 2339–2352, 2018.
- [53] K. Wongsuphasawat, D. Moritz, A. Anand, J. Mackinlay, B. Howe, and J. Heer, "Voyager: Exploratory analysis via faceted browsing of visualization recommendations," *IEEE Transactions on Visualization & Computer Graphics*, no. 1, pp. 1–1.

- [54] M. J. Norušis, *The SPSS guide to data analysis*. Spss, 1986.
- [55] I. SAS, "Sas user's guide: statistics," *SAS Institute, Cary, NC*, 1985.
- [56] B. Shneiderman, "The eyes have it: A task by data type taxonomy for information visualizations," in *The Craft of Information Visualization*. Elsevier, 2003, pp. 364–371.
- [57] M. Q. Wang Baldonado, A. Woodruff, and A. Kuchinsky, "Guidelines for using multiple views in information visualization," in *Proceedings of the working conference on Advanced visual interfaces*. ACM, 2000, pp. 110–119.
- [58] N. Elmqvist and J.-D. Fekete, "Hierarchical aggregation for information visualization: Overview, techniques, and design guidelines," *IEEE Transactions on Visualization and Computer Graphics*, vol. 16, no. 3, pp. 439–454, 2009.
- [59] Z. Liu, B. Jiang, and J. Heer, "immens: Real-time visual querying of big data," in *Computer Graphics Forum*, vol. 32, no. 3pt4. Wiley Online Library, 2013, pp. 421–430.
- [60] Y. Ioannidis, "The history of histograms (abridged)," in *Proceedings 2003 VLDB Conference*. Elsevier, 2003, pp. 19–30.
- [61] H. Mousavi and C. Zaniolo, "Fast and accurate computation of equi-depth histograms over data streams," in *Proceedings of the 14th International Conference on Extending Database Technology*. ACM, 2011, pp. 69–80.
- [62] "A Lone Data Whiz Is Fighting Airbnb—and Winning," [https://en.wikipedia.org/wiki/Breadcrumb\\_\(navigation\)](https://en.wikipedia.org/wiki/Breadcrumb_(navigation)).
- [63] M. Bostock, V. Ogievetsky, and J. Heer, "D<sup>3</sup> data-driven documents," *IEEE transactions on visualization and computer graphics*, vol. 17, no. 12, pp. 2301–2309, 2011.
- [64] D. V. Beard and J. Q. W. II, "Navigational techniques to improve the display of large two-dimensional spaces," *Behaviour & Information Technology*, vol. 9, no. 6, pp. 451–466, 1990.
- [65] "The us flight dataset." <https://www.transtats.bts.gov/>.
- [66] A. Sarvghad, B. Saket, A. Endert, and N. Weibel, "Embedded merge & split: Visual adjustment of data grouping," *IEEE transactions on visualization and computer graphics*, vol. 25, no. 1, pp. 800–809, 2018.
- [67] H. Dong, S. Liu, S. Han, Z. Fu, and D. Zhang, "Tablesense: Spreadsheet table detection with convolutional neural networks," in *Thirty-Third AAAI Conference on Artificial Intelligence*, 2019.
- [68] Z. Chen, S. Dadiomov, R. Wesley, G. Xiao, D. Cory, M. Cafarella, and J. Mackinlay, "Spreadsheet property detection with rule-assisted active learning," in *Proceedings of the 2017 ACM on Conference on Information and Knowledge Management*. ACM, 2017, pp. 999–1008.
- [69] Z. Liu *et al.*, "The effects of interactive latency on exploratory visual analysis," *IEEE TVCG*, vol. 20, no. 12, pp. 2122–2131, 2014.

**Sajjadur Rahman** is a PhD student at the Department of Computer Sci-

ence at University of Illinois, Urbana-Champaign, IL, USA. He received the M.Sc. degree in 2014 and the B.Sc. degree in 2012 from Bangladesh University of Engineering and Technology, Dhaka, Bangladesh.

**Mangesh Bendre** received the Ph.D. degree in 2018 from University of Illinois, Urbana-Champaign. He is a Research Scientist at VISA Research, Palo Alto, CA, USA.

**Yuyang Liu** is an undergraduate student at the Department of Computer Science at University of Illinois, Urbana-Champaign.

**Shichu Zhu** is a graduate student (MCS) at the Department of Computer Science at University of Illinois, Urbana-Champaign. He received the B.S. in Atmospheric and Oceanic Science from Peking University, Beijing, China.

**Zhaoyuan Su** is a PhD student at the Donald Bren School of Information and Computer Sciences at the University of California Irvine, CA, USA. He received the B.S. in Architecture from University of Illinois, Urbana-Champaign.

**Karrie Karahalios** received the Ph.D. degree in 2004 from Massachusetts Institute of Technology, Cambridge, MA, USA. She is a Professor in Computer Science at the University of Illinois, Urbana-Champaign.

**Aditya Parameswaran** received the Ph.D. degree in 2013 from Stanford University, CA, USA. He is an Assistant Professor in the School of Information and Electrical Engineering and Computer Sciences at the University of California, Berkeley, CA, USA. He was previously an assistant professor in Computer Science at the University of Illinois, Urbana-Champaign.