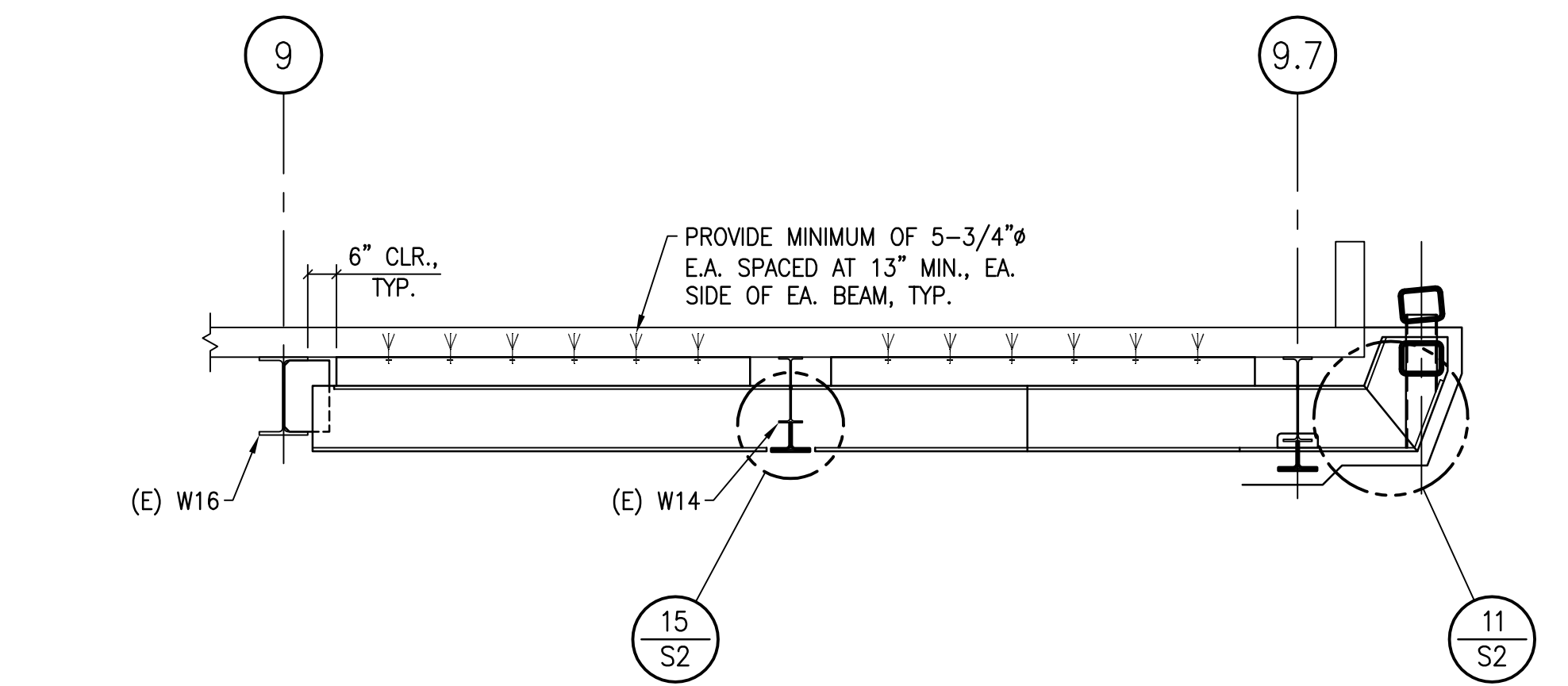
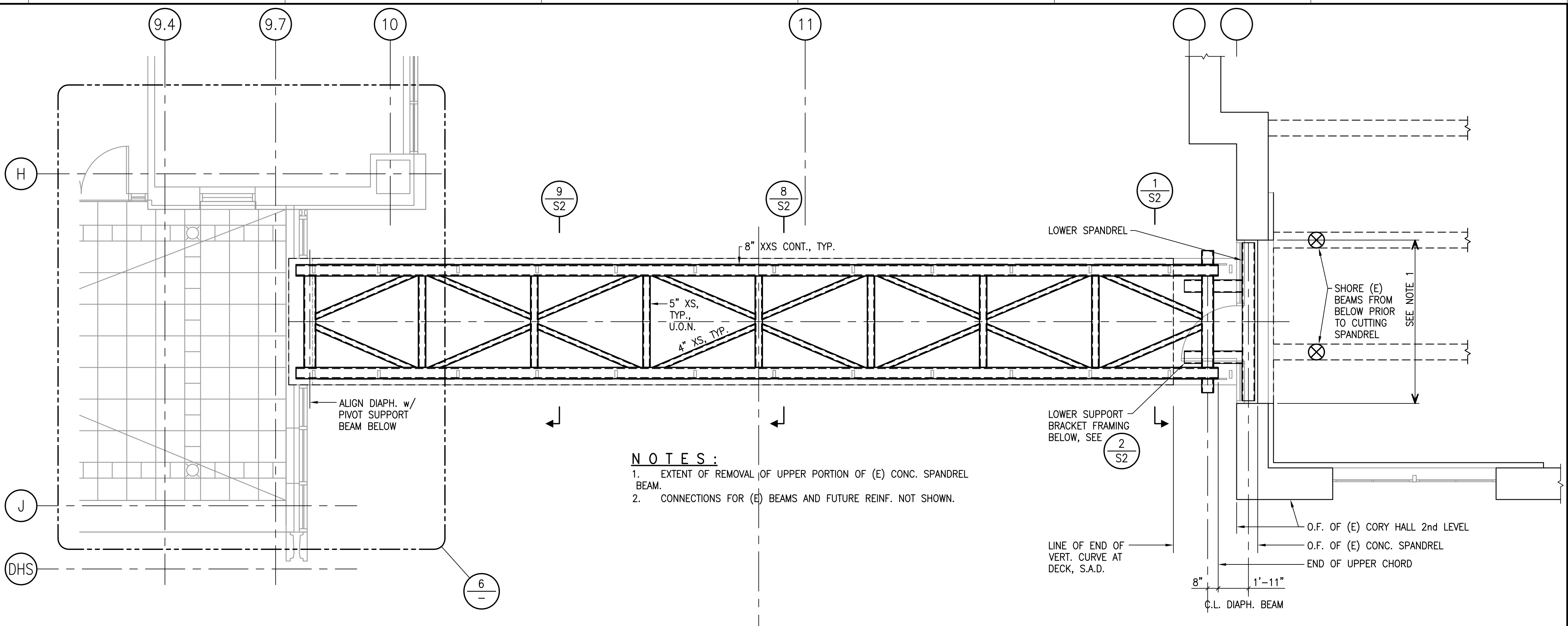


6 PARTIAL PLAN AT CITRIS 6th LEVEL  
SCALE: 1/4"=1'-0"

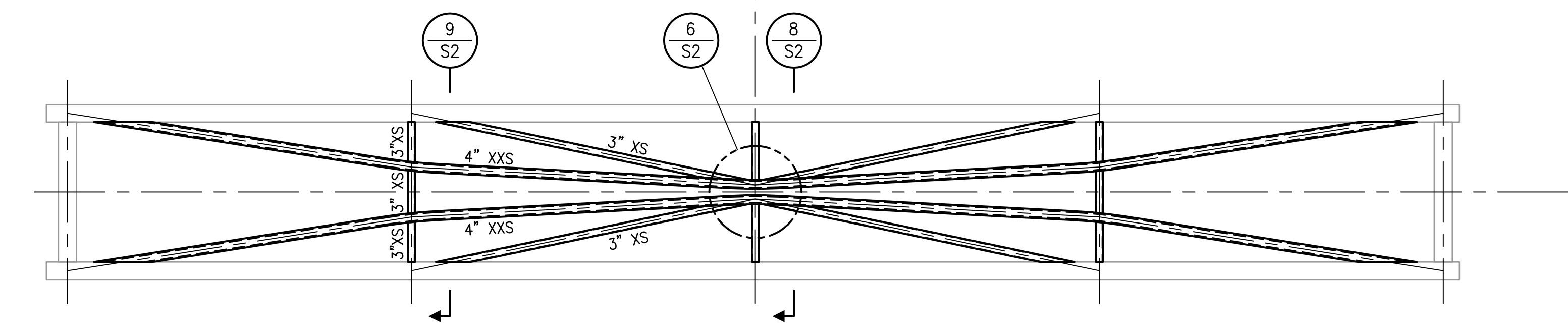


7 SECTION  
SCALE: 3/8"=1'-0"

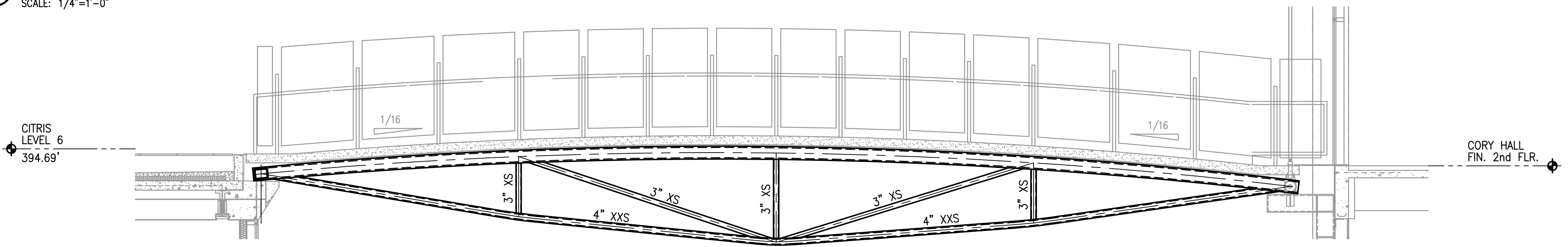


1 TRUSS UPPER CHORD FRAMING PLAN  
SCALE: 1/4"=1'-0"

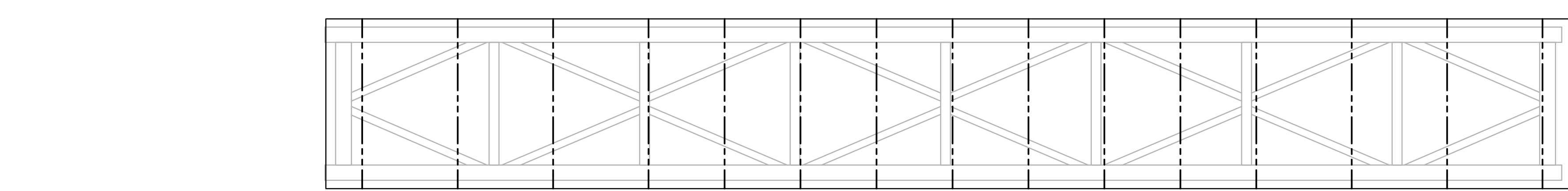
**NOTES:**  
1. EXTENT OF REMOVAL OF UPPER PORTION OF (E) CONC. SPANDREL BEAM.  
2. CONNECTIONS FOR (E) BEAMS AND FUTURE REINF. NOT SHOWN.



2 TRUSS LOWER CHORD & WEB FRAMING PLAN  
SCALE: 1/4"=1'-0"



3 FRAMING ELEVATION  
SCALE: 1/4"=1'-0"



4 DECK PLAN  
SCALE: 1/4"=1'-0"

**NOTES:**  
1. DECK PANELS SHALL BE PRECAST OR SITE CAST AND CURED PRIOR TO ERECTION. CONCRETE SHALL BE THE SAME AS STRUCTURAL WALL MIX w/ TITANIUM DIOXIDE PIGMENT ADMIX FOR COLOR.  
2. REINF. w/ WELDED WIRE MESH & FIBERMESH "STEALTH" POLY FIBERS  
3. SHEAR STUDS, SEE SECTION.

UNIVERSITY OF CALIFORNIA  
BERKELEY

**DAVIS HALL NORTH  
REPLACEMENT PROJECT**

CENTER FOR INFORMATION  
TECHNOLOGY RESEARCH IN THE  
INTEREST OF SOCIETY

CAAN #1152 UC PROJECT #12115A

**SMITHGROUP**  
architecture engineering interiors planning

SMITHGROUP, INC.  
225 BUSH STREET  
11TH FLOOR  
SAN FRANCISCO, CALIFORNIA 94104  
T 415.227.0100  
F 415.882.7718  
www.smithgroup.com

Forell/Eleaser Engineers, Inc.  
STRUCTURAL ENGINEER  
192 Pine Street, Suite 600, San Francisco, California 94111  
415.837.0700

Bard, Rao + Athanas Consulting Engineers, LLC  
MECHANICAL / ELECTRICAL / PLUMBING ENGINEERS  
550 South Hope Street, Los Angeles, California 90071  
213.593.9062

Integrated Engineering Services  
PROCESS MECHANICAL / ELECTRICAL / PLUMBING  
171 Saratoga Avenue, Suite 200, Santa Clara, California 95051  
408.261.3500

Suzman & Cole Design Associates  
LANDSCAPE ARCHITECT  
351 Rhode Island St., Suite 205, San Francisco, California 94107  
415.252.0111

BKF Engineers  
CIVIL ENGINEER  
4780 Crisot Drive, Suite 104, Pleasanton, California 94588  
925.398.1700

TEECOM Design Group  
TELECOMMUNICATIONS / DATA ENGINEERS  
1333 Broadway, Suite 601, Oakland, California 94612  
510.337.2900

Hathaway Dinwiddie Construction Company  
CM / CONTRACTOR  
565 Laurelwood Road, Santa Clara, California 95054-2419  
408.988.4200

ISSUED FOR	REV	DATE

SEALS AND SIGNATURES  
ARCHITECT OR ENGINEER OF RECORD

**CALIFORNIA STATE FIRE MARSHAL  
APPROVED**

Approval of this plan does not authorize or approve any omission or deviation from applicable regulations. Final approval is subject to field inspection. One set of approved plans shall be available on the project site at all times.

Reviewed by \_\_\_\_\_  
PROJECT NORTH

**IDENTIFICATION STAMP  
DIV. OF THE STATE ARCHITECT**

FILE NO. 01-UC BERKELEY  
APPL. NO. 01-107530

AC FLS SS  
DATE: \_\_\_\_\_

DRAWING TITLE  
**PLANS & DETAILS**

SCALE AS NOTED  
SCALE 38440.001  
PROJECT NUMBER  
**S1**  
DRAWING NUMBER

1/16/2007 2:05:00 PM CAD/DHS/S1/1461 SHEET 1/10 10/12/2007 11:24:49 AM  
 XREF Filename List: ADSL\_VDRNUMBER\_VLENAME  
 Unit: Feet Precision: 3/16  
 Plot Layout: PSPACE SHEET @ 1:1  
 Plot Date: